

SPRING 2014

# MOUNT LAGUNA IMPROVEMENT ASSOCIATION CABIN NEWSLETTER



VOLUME 12, No. 49

MARCH 2014

## Dates to Remember

**April 19** **Chili Fest Social**  
See page 3 for details.

**May 3** **Board Meeting**  
Cabin 716

**June 21** **Progressive Dinner**  
Cabins 715, 716, and  
718 in Boiling Springs Tract



## WATER SYSTEM UPGRADES

*FRANK KALINOWSKI,  
MLIA PRESIDENT, CABIN 504*

We are on our way! We have replaced our old 1976 transfer pump/motor in the Boiling Springs Pump House with a new stainless steel pump and premium efficiency motor. The new pump/motor is protected by two different surge protectors and controlled by a computer in a temperature-controlled cabinet. All of the piping and valves in the pump house has been replaced. The work was completed by Tim Guishard Enterprises, with parts and labor totaling \$9970.

With the unusually warm and dry winter, we decided to proceed with building the new well-head protective structure. The well is in an archeologically sensitive area and we needed the approval of the Cleveland National Forest District Office. The initial excavation for the structure footing was overseen by the USFS archeologist Steve Harvey. A low, concrete block structure with a corrugated metal covering and all new electrical components has been built. JJ Douda Construction did the work with labor and materials totaling about \$7900. The new structure is now completed.

*Continued on page 2*

Stay up-to-date with MLIA

Visit our website at [www.mtlaguna.org](http://www.mtlaguna.org)



## President's Report, *continued*

Our next task is to rehab the well itself. This was last performed in November 2002. The 2002 documentation indicated 23 gallons/minute (gpm) were being pumped out of the well. The fill rate currently is much lower having decreased to 17 gpm. It is time to take the necessary steps and address repair and maintenance issues to ensure that MLIA has an adequate supply of water. We will be getting bids for this job.

The only uncertainty is that we do not know exactly what will be required to rehab the well until it is



NEW PUMP CONTROLLER  
COMPUTER.

NEW TRANSFER PUMP INSTALLED.

inspected. We may find that the job requires replacement of the submersible pump and/or the pipe (over 600 feet).

We have many social events planned this year, starting with the Chili Fest Social on April 19. This year we are going to have a bit of competition with voting for the "Best Chili." I can't wait.

See you there!

## Quick Tips to Save Water and Money

- Shorter Showers - Five minutes or less. *Estimated savings: 75 gallons per person a week.*
- Fewer Flushes - Flush only when necessary. *Estimated savings: 50 gallons per person a week.*
- Catch Water in a Bucket – Capture the cold water running while waiting for hot shower water. Use on plants, the garbage disposal, or flush the toilet. *Estimated savings: 50 gallons per person a week.*
- Run Full Loads Only - Always run full loads in the dishwasher and clothes washer. *Estimated savings: 30 gallons a week for the dishwasher and 100 gallons for the clothes washer.*
- Stop Dripping - Fix leaky faucets, pipes, and fixtures inside and outside. *Estimated savings: 150 gallons for each leak.*
- Don't Water Your Driveway or Patio - Use a broom or blower to clean hardscape surfaces, not water. *Estimated savings: 100 gallons a week.*
- Rinse Vegetables and Fruits in a Sink or Pan Full of Water –Don't run water to clean your vegetables/fruits. Use the pan of water for the garbage disposal or a plant. *Estimated savings: 30 gallons a week.*

Look online at City of San Diego Water Department, <http://www.sandiego.gov/water/conservation/tips.shtml> for more information.

MOUNT LAGUNA IMPROVEMENT ASSOCIATION

# CHILI FEST SOCIAL

All Cabin Owners, Shrine Camp Owners, Private Property Owners, LMVA, Visitors and Guests Are Invited.



**Saturday, April 19**

**1:00 pm - 4:00 pm**

**Mt Laguna Community  
Church and  
Conference Center**

Sunrise Highway at  
Mile Marker 23.5

**\$5.00 Donation  
Opportunity Prizes**



**Good Food!  
Good Neighbors!  
Lots of Fun!**

**Bring your favorite Chili, Cornbread,  
Salad or Dessert to share.**

**Vote for this year's "Best Chili."**

**MLIA will supply drinks, plates, utensils and  
cups. Bring your chili in a crockpot to keep it  
warm and serving utensils for your dish.**

*San Diego County Regulations allow only Service Animals at  
functions serving food. No pets, please.*

**RSVP to Cookie Ringhand at (619) 889-7145  
or email: [cookie@cox.net](mailto:cookie@cox.net)  
so we have a head count and know who is  
bringing what!**

## Cabin Road Access Report

With Spring's approach we start thinking about making drainage repairs to areas damaged by Winter rains and flood waters. We have been fortunate, in the past, to have the use of a large tractor and backhoe to help with this work. Unfortunately access to that equipment may be a thing of the past due to insurance issues. We desperately need our own Bobcat or similar vehicle with a scoop and/or trencher for laying water line pipe. Please contact me, or any Board Member, should you encounter this much needed piece of equipment.

We are also in need of culvert material in 6-8' lengths with at least 16" in diameter. Wide drainage material is critical to the free flow of water during heavy rain and melting snow. A clogged storm pipe can ruin the access to your cabin in a matter of hours.

### Help Wanted

Volunteers are also needed to assist this Spring with road repairs and help with occasional maintenance of our roadway areas during tree shedding times and after/during heavy rains.

Please become involved! You will meet the hardest of your fellow cabin owners and may end up at a barbecue after the work is done!!

### Road Base Material

MLIA maintains road base material at various locations on the mountain for your use.

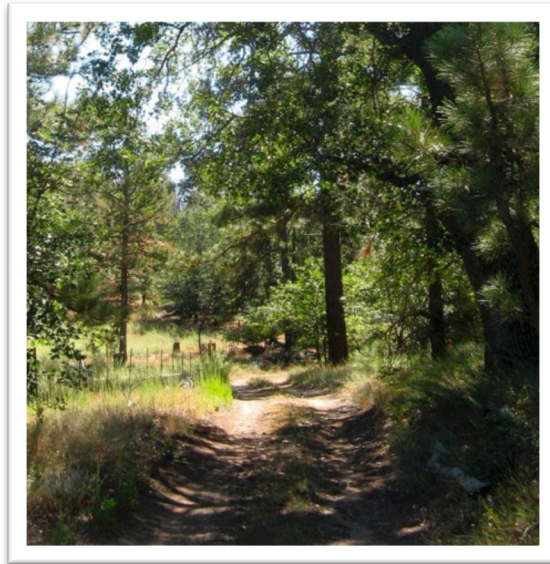
*Please Note: this road base material is for the main roadway only, not for use on your cabin driveway.*

I have very good connections for procuring both road base and decomposed granite (DG) which develops concrete consistency when properly applied. Let me know if you would like a load of road base or decomposed granite (12.5 tons) delivered to your cabin. A delivered load of either substance costs about \$250. We will try to coordinate the

deliveries to reduce costs to you.

That's it for this season and look forward to meeting you on the road!!!

*Carl Sessions  
Cabin 716, (619) 571-2284*



## What's Happening at National Forest Homeowners

The Cabin Fee Act is moving ahead, but slowly. (The most recent updates are posted on the MLIA website, [mtlaguna.org](http://mtlaguna.org) under the "News" menu page.) Although the update mentions "late January" for a response from the Congressional Budget Office (CBO) as of February 28 we have not heard that the CBO review is complete.

The results of the fee survey by the National Forest Homeowners showed that Mount Laguna definitely have annual fees that are relatively low compared to most others. Cabin tract location means a lot and some extremely high fees of more than \$19,000 a year appear for cabins on Lake Tahoe and similar areas that have estimated market values of between \$400,000 to \$500,000. Many cabin owners faced with fees at the higher end say that without relief on their fees they will

*Brock Houston, Cabin 807*

probably sell their cabin.

A summary of the 2014 Cabin Fee Survey conducted by the National Forest Homeowners can be found the website <http://www.nationalforesthowners.org>.

### National Forest Homeowners 2014 Convention

April 3 -5 in Reno, Nevada  
Silver Legacy Resort

Get information and register online at  
[www.nationalforesthowners.org](http://www.nationalforesthowners.org)



# Sweet Scent, Powerful Plant

## *Ceanothus, spp*

By Joanne Odenthal,  
Cabin 505

One of the first plants to start blooming along Sunrise Highway in spring is *Ceanothus*, sometimes known as Wild Lilac or Mountain Lilac. We have both blue and white flowering shrubs on the mountain. The billows of white and blue you see driving up Sunrise Highway in April and May are *Ceanothus*. The various species of *Ceanothus* interbreed, so sometimes it's difficult to know which species is which. Our mountains have *Ceanothus leucodermis* (blue flowering) and *Ceanothus palmeri* (white flowering) as well as others.

On the coast, *Ceanothus* shrubs begin blooming in February. In the foothills, they begin to bloom in March. Driving up Sunrise Highway you can see spring moving up the mountain, with blooms at the base of Sunrise in April and on the top of the mountain well into June. In full bloom, the plant

smells intensely sweet and is a magnet for bees. *Ceanothus* seeds are germinated by fire. The plants are also considered fire resistant, and they fix nitrogen into the soil as well as holding the soil of hillsides with their powerful root system.

California Indians used *Ceanothus* blossoms and berries as soap and shampoo. If you rub the blossoms between your wet hands, they will lather as a result of the high saponins in the plant. Indians also used the plant as a blood purifier and general tonic. (Garcia & Adams, *Healing with Medicinal Plants of the West*, 2005).

*Ceanothus* is known to herbalists as "Red Root" from the red color of the inner root bark. Modern day herbalists also use *Ceanothus* as a blood purifier. Red root is considered to be an herb that helps the liver purify the blood more effectively. It is

also used to cleanse the lymph system. Thin lateral roots are gathered from plants that are at least two years old, never taking enough to harm the plant.



The roots are chopped and placed in alcohol to make a strong extract. Red root is considered to be a very strong herbal medicine. This lovely plant packs a powerful wallop, so be sure to consult a professional before you use it.

## CREATE DEFENSIBLE SPACE NOW

100 feet of defensible space protects both our cabin and firefighters during a forest fire.

### Zone 1: Lean, Clean & Green

The area 30' away from the cabin on all sides.

Zone 1 must be cleared of:

- Flammable material.
- Pine needles, leaves, branches, brush, twigs and pine cones.
- Tree branches within ten feet of the cabin chimney and stovepipe.
- Firewood stacked 30' away from all structures.

### Zone 2: Reduced Fuel Zone

The area between 30' and 100' all around the cabin.

- Native vegetation thinned by 50%.
- Lower tree branches trimmed at least five feet off the ground.
- All dead and dying vegetation removed.

The drought is now and the grasses are dry.

*Consider doing your cabin defensible space cleanup sooner rather than later this year.*

Restrictions on power tool use may be in place earlier than usual this season.

Sources: CalFire, ReadySanDiego.org, CAFEAlliance.com,

## MT. LAGUNA FIRE SAFE COUNCIL NEWS

Our beautiful Mt. Laguna is experiencing a drought and our oaks and pines are stressed. The threat of fire is great. Thanks to everyone on the mountain for your vigilance. Complacency is our biggest enemy. The Chariot Fire is a constant reminder that fire could happen again with devastating consequences for the forest, cabins, plant and wildlife and in dire circumstances, human life. Vigilance requires that we are both knowledgeable and prepared.

The mission of the Mt. Laguna FSC is to work as one community with agency partners to reduce the threat of fire and promote a healthy forest. At the March 15<sup>th</sup> meeting representatives from the Greater San Diego Fire Safe Council, Faith Berry, Ann Baldridge and Clay Howe spoke about the importance of creating Defensible Space around our homes and cabins.

Future guest speakers (dates to be determined) will include **Richard Edwards** of Kamps Propane. Our propane tanks are very old and their fittings and regulators are inefficient. Most of us take our propane tanks for granted, but during the Chariot Fire we realized how dangerous they can be.

Back by popular demand, **Jerry Schaefer**, cabin owner and archaeologist, will speak on the life, artifacts, and culture of the Indians who lived on Mt. Laguna 10,000 years ago. Bring the children/ grandchildren and learn a fascinating part of San Diego history.

If you have a topic or issue you would like addressed at one of our meetings, please contact me at: [pspinetta@cox.net](mailto:pspinetta@cox.net).

Thanks to the generous donations resulting from our holiday appeal and a grant from SDG&E we are able to continue our Camp Ole dumpster and brush pile annual fuel reduction program. Dates and details will be announced when they are finalized. A big *Thank You* to **Bob Olsen** who has taken the lead on this and to **Jason Kraling**, our USFS Battalion Chief, who is coordinating the program with the USFS and Camp Ole.

*Pat Deasey-Spinetta, President  
Mt Laguna Fire Safe Council*

### FIRE SAFE COUNCIL MEETINGS

**THIRD SATURDAY OF EACH MONTH, 10:00 AM – 12:00 PM  
AT THE RED TAILED ROOST**

**APRIL 19 - Donn Christensen**, our Cleveland National Forest District Ranger will discuss cabin compliance issues. Bring your questions or email your questions in advance to Donn Christensen: [dchristiansen@fs.fed.us](mailto:dchristiansen@fs.fed.us).

Enjoy the MLIA Chili Fest Social after the meeting.

**MAY 17 AND JUNE 21**

SPRING 2014



## MOUNT LAGUNA IMPROVEMENT ASSOCIATION

Founded in 1935, the Mount Laguna Improvement Association acts as a liaison between cabin owners and the Forest Service addressing water, roads, and wood removal.

### Water Maintenance

Please report any problems with the MLIA water system to Dan Fritz at (619) 405-1452.

## Have You Moved?

Send your address and email changes to Karen Motta ([RKMotta@cox.net](mailto:RKMotta@cox.net)) or call (760) 440-9554.

## Interested in Mount Laguna History?

James Newland, Cleveland National Forest Historian, compiled and published a history of the Descanso District and the Mount Laguna cabin residences in 1995. Titled *Historic Resources Survey and Evaluation Report: Recreation Residences: Descanso District*, it provides histories for "summer residences" in the Laguna, Cuyamaca and Descanso tracts. These include brief descriptions of the cabins in 1995 and photos. Historic background of Laguna Mountain for the Hispanic period beginning in 1769, the early American period in the last half of the 1800's, creation of the Cleveland National Forest in the early 1900's, establishment of the residence tracts, and much more are part of this CNF report. Interesting old photos and maps of the area are included. This soft-cover book is 464 pages.

Please contact Karen Motta ([RKMotta@cox.net](mailto:RKMotta@cox.net)) or call (760) 440-9554 if you are interested in buying a copy of this very interesting Historic Resources Survey. The cost of the book will depend on the number of copies that are made.

### Historic Resources Survey & Evaluation Report: Recreation Residences: Descanso District

for

Cleveland National Forest  
USDA-Forest Service  
Pacific Southwest Region

September 1995

By

James D. Newland  
Historian, CNF